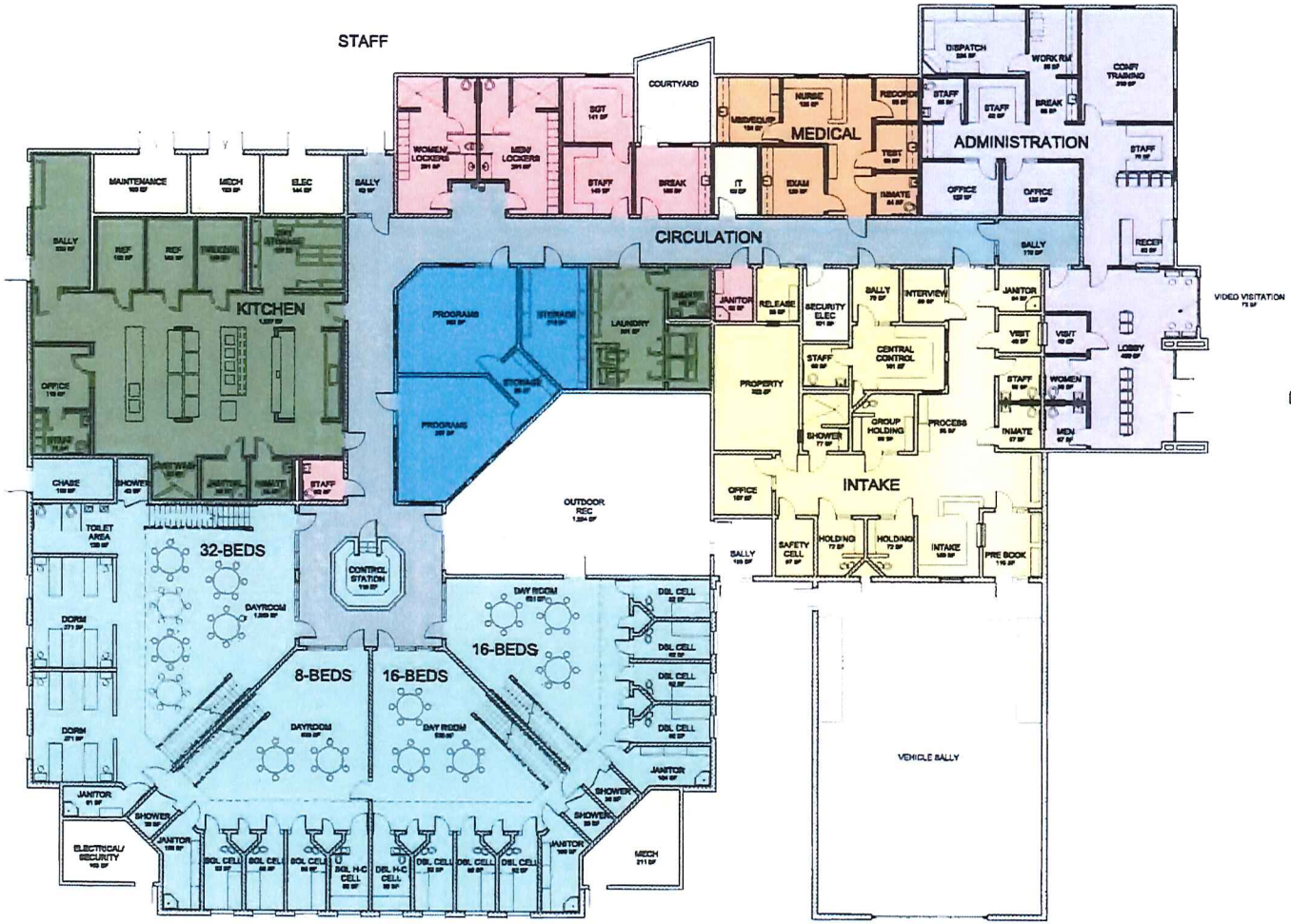


TOTAL GROSS SQUARE FOOTAGE:

FIRST FLOOR: 22,086
 UPPER TIER: 3,714
 OUTDOOR REC: 1,254
 TOTAL: 27,054



PUBLIC

- ADMIN
- CIRCULATION
- FOOD & LAUNDRY SERVICES
- HOUSING
- INTAKE
- MECH/ELEC/IT
- MEDICAL
- PROGRAMS & SUPPORT
- STAFF SUPPORT

1 FIRST FLOOR
 SCALE: 1/8" = 1'-0"



FLOOR PLAN

TRINITY COUNTY SB863 JAIL AUGUST 10, 2015