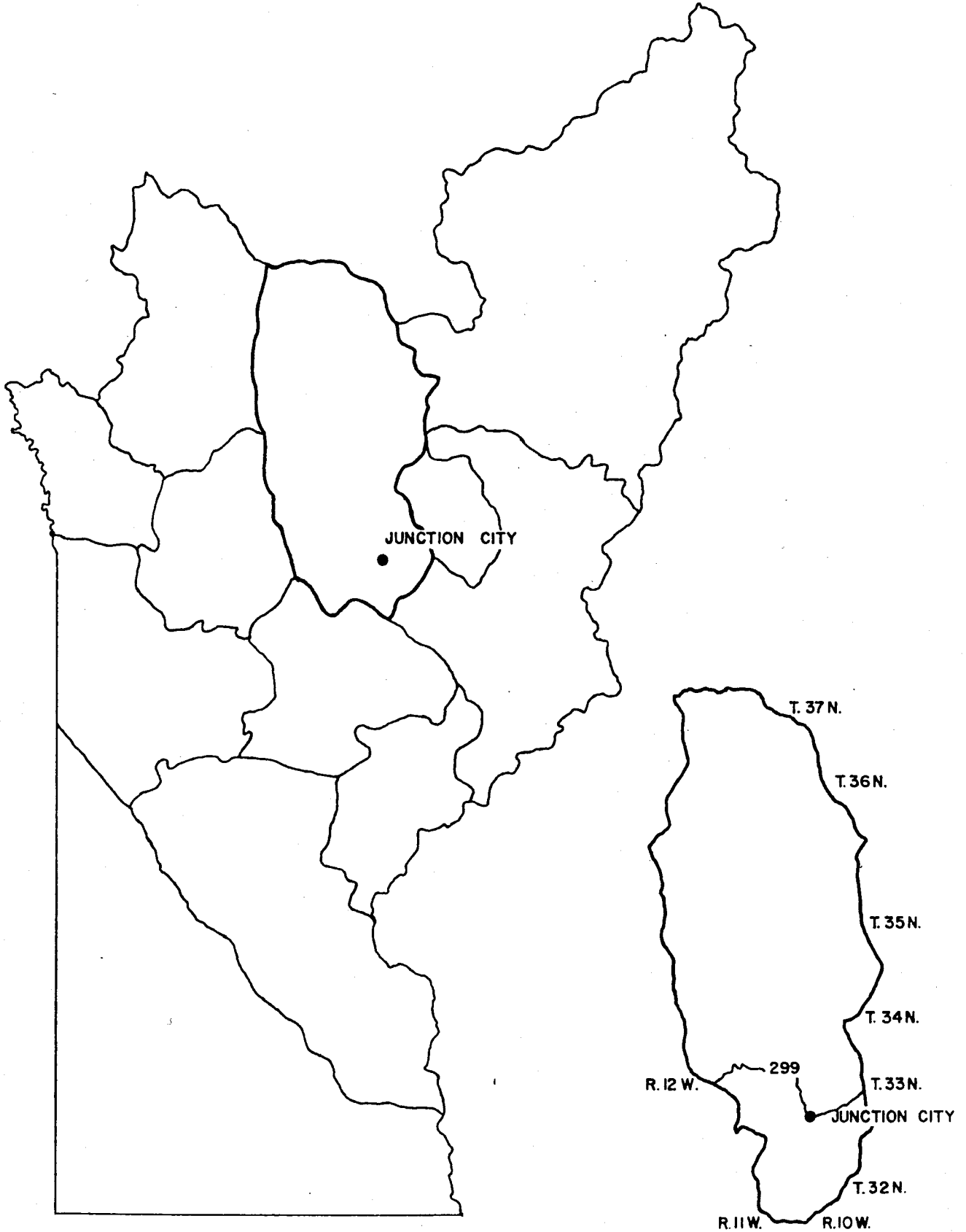


JUNCTION CITY



JUNCTION CITY COMMUNITY PLAN

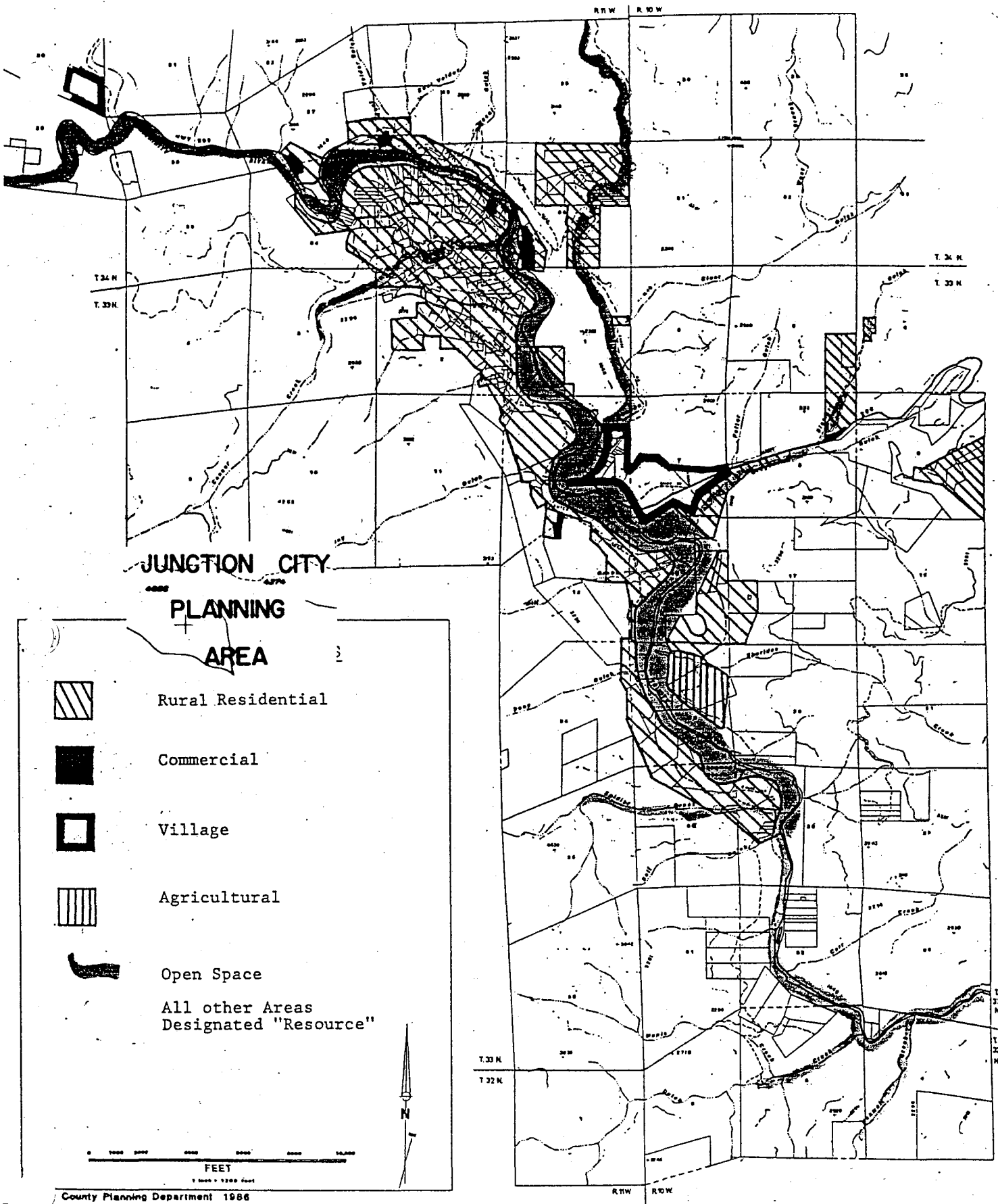
MAP BOOKLET

INDEX







Sheet 1	Junction City Townsite
Sheet 2	Coopers Bar
Sheet 3	Helena
Sheet 4	Backbone Ridge
Sheet 5	Dedrick
Sheet 6	Canyon Creek Lakes
Sheet 7	Rattlesnake Camp
Sheet 8	Upper North Fork
Sheet 9	Grizzly Lake

LEGEND

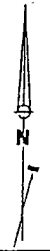
AG.....	Agriculture
OS	Open Space
RR	Rural Residential
RE.....	Resource
V	Village
AS.....	Acquisition Site
HS.....	Historical Site
ST	Special Treatment
NRP	National Register Potential
CEA	Critical Environ- mental Area
NL	National Landmark



**JUNCTION CITY
PLANNING
AREA**

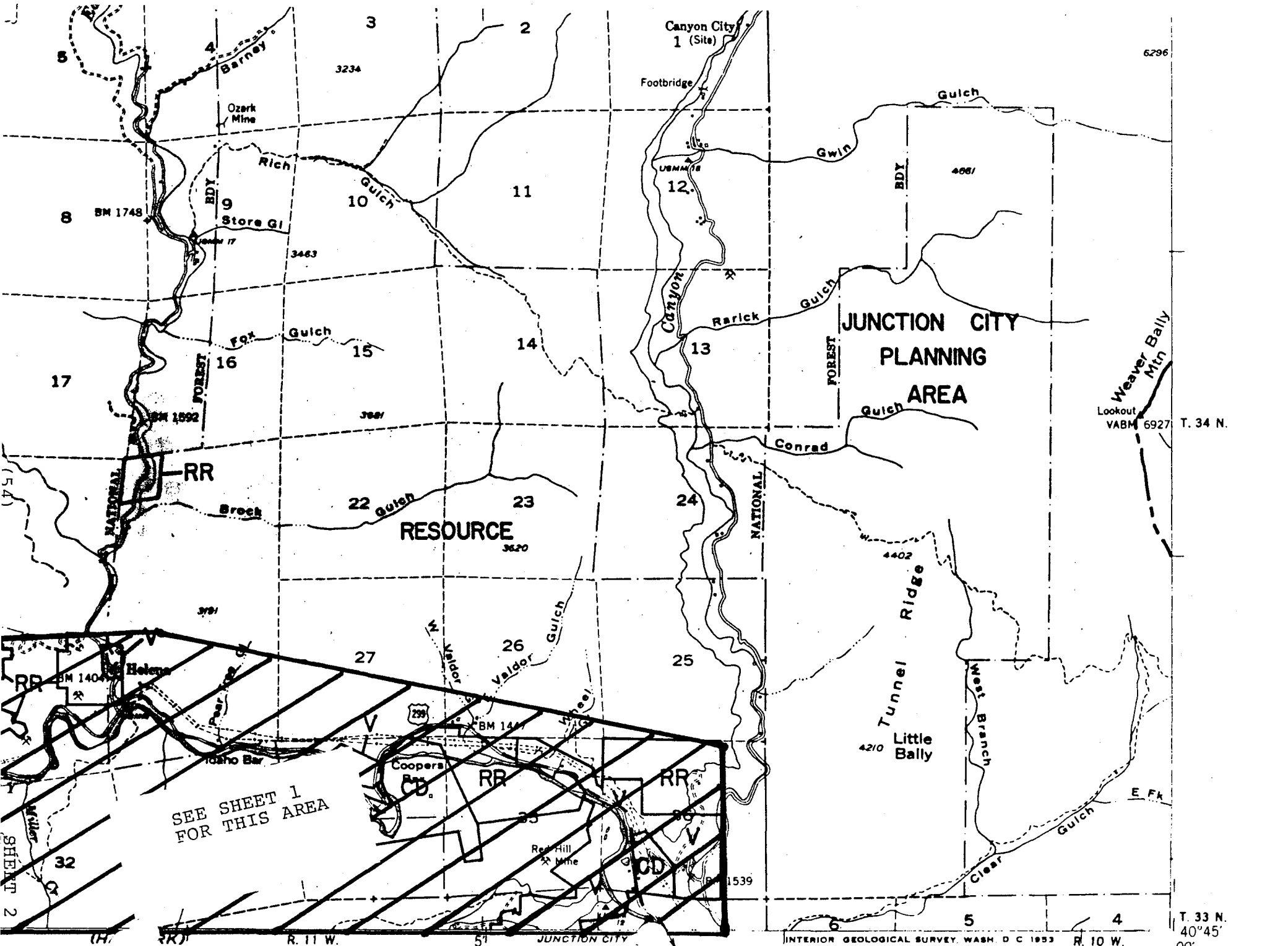
-  Rural Residential
-  Commercial
-  Village
-  Agricultural
-  Open Space
-  All other Areas Designated "Resource"

0 4000 8000 12000 16000
FEET
1:24000 = 12000 Feet



County Planning Department 1986

SHEET 1



6296

T. 34 N.

T. 33 N.
40°45'
00'

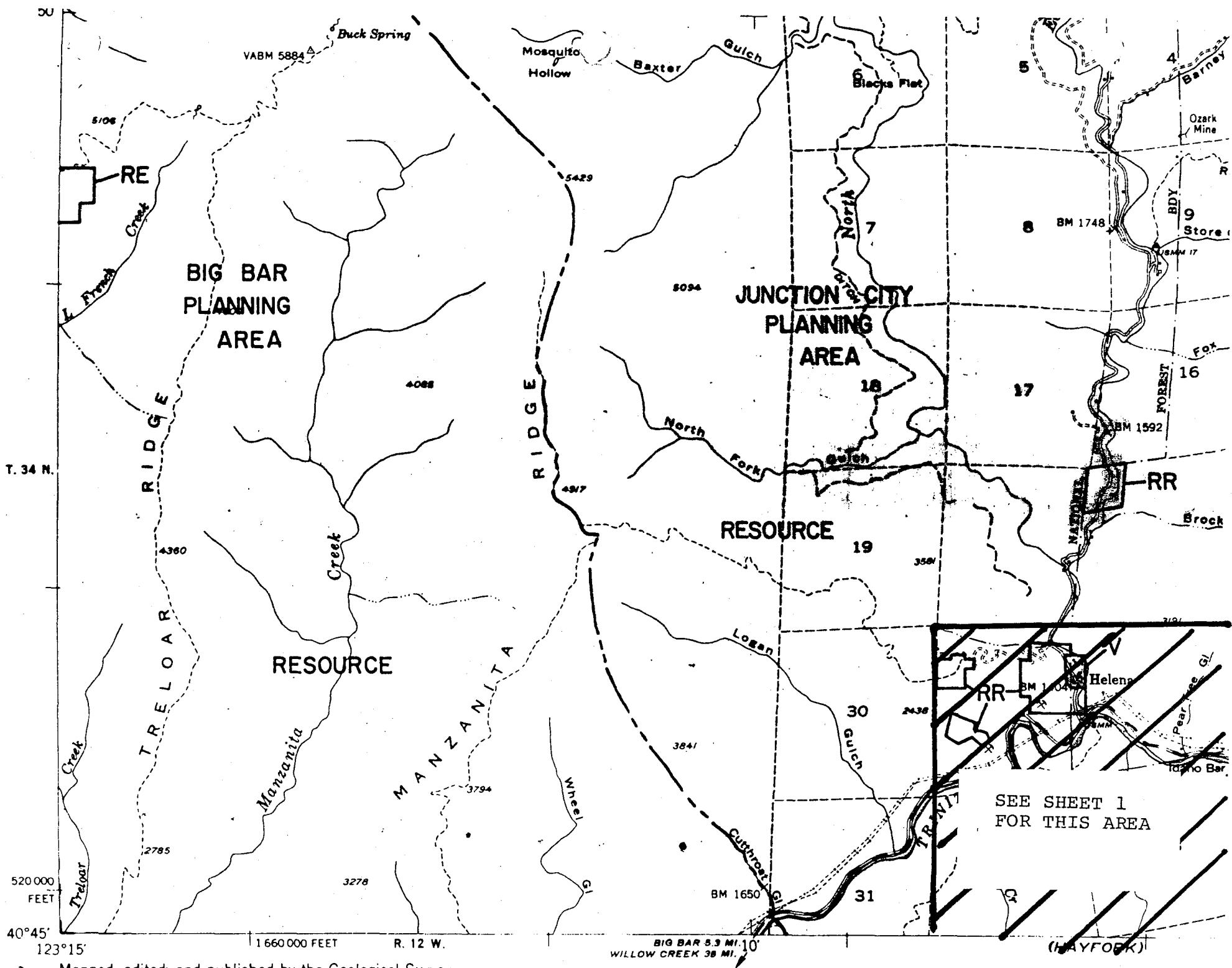
INTERIOR GEOLOGICAL SURVEY, WASH. D. C. 1953

ROAD CLASSIFICATION

(WE)

(55)

SHEET 3



55'

Thurston

Peaks

1909

6996

R

D

G

E

511

R

D

G

E

501

R

D

G

E

501

R

D

G

E

Twin Sisters Mtn

5932

Thurston

Trinity

Blue Ridge

Norway Gulch

4047

N A T I O N A L

JUNCTION CITY

PLANNING AREA

5718

Stoveleg Gap

Backbone Ridge Lookout
BM 4653

17 Todd Cabin

BM 3730
China Sprs

China Springs Gl

19

Long Ranch

30

Fork

29

Yellowstone Mine
Coleridge (Site)

R.11.W.

31

32

Digger Pine Flat

Waldorff Crossing

3723 of BM

2344

Enterprise Mine

Noonan Gl

Lone Jack Mine

33

Mine

37.

4503

9

4307

16

21

28

37.

Noonan Gl

4

Crumpy Gl

East

9

Yellow Jar

Indian

Squaw Gulch

T. 35 N.

(IRONSIDE MTN) N.

BIG BAR
PLANNING
AREA

4916

East Fork

RESOURCE

4833

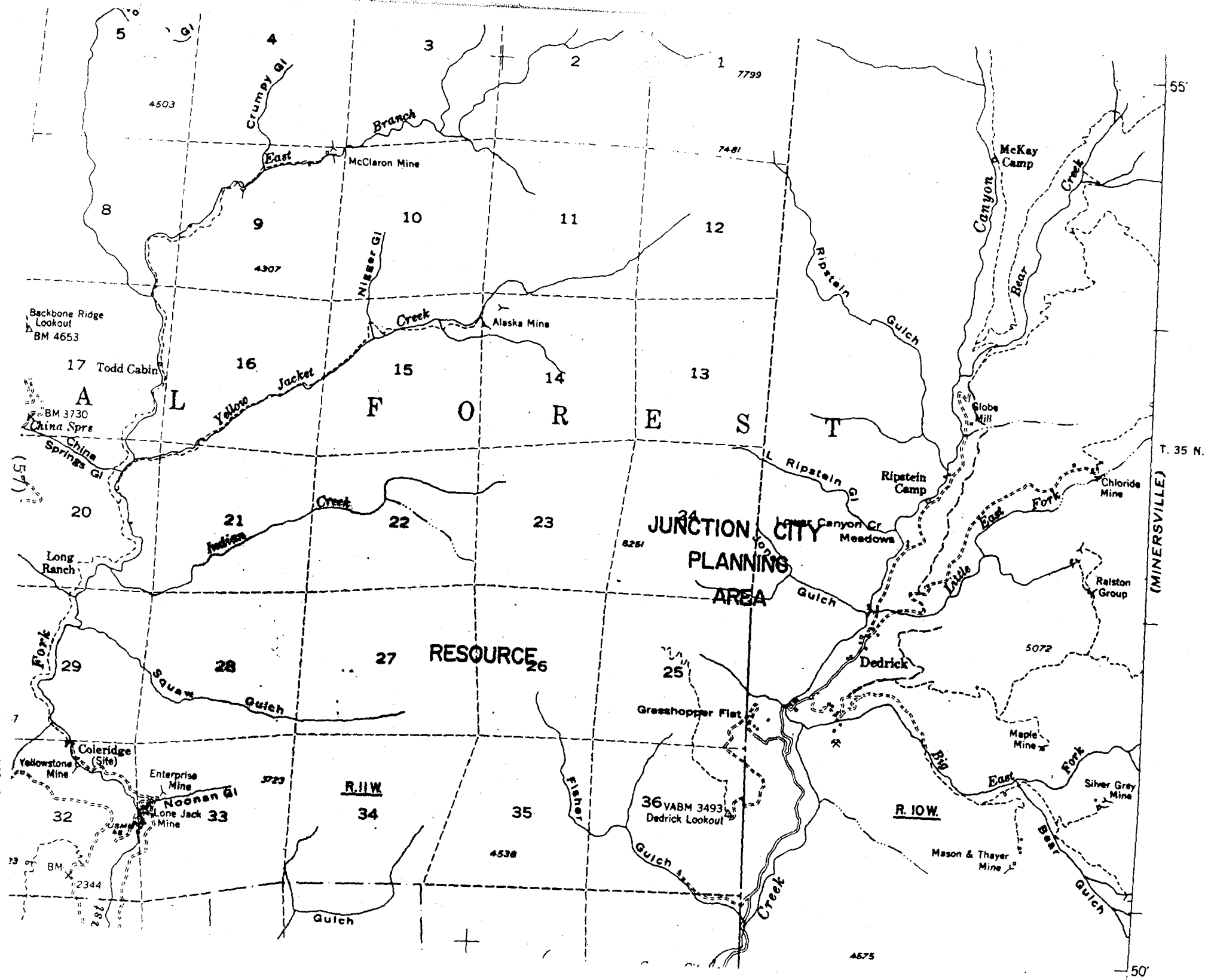
R.12.W.

501

50'

(56)

SHEET 4



STATE OF CALIFORNIA

EARL WARREN, GOVERNOR

3. DURKEE, DIRECTOR OF PUBLIC WORKS

D. EDMONSTON, STATE ENGINEER

(SAWYERS BAR 1:125 000)

HELENA QUADRANGLE

CALIFORNIA-TRINITY CO.

15 MINUTE SERIES (TOPOGRAPHIC)

123° 00' 41" 00'

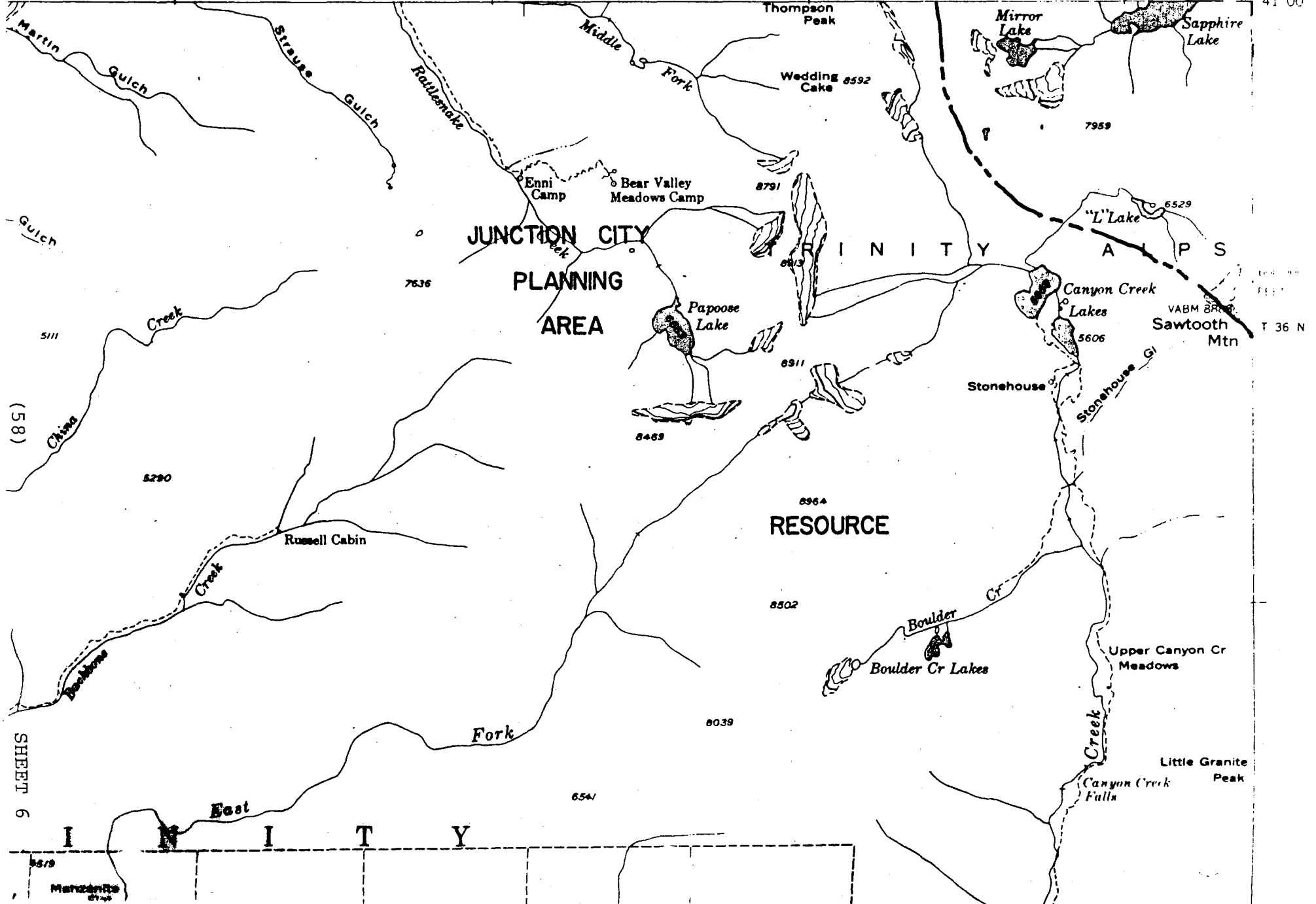
R. 11 W.

5'

1 720 000 FEET

R. 10 W.

123° 00' 41" 00'



SHEET 6

I N I T Y

East

Manzanita

RS BAR
100

DEPARTMENT OF THE INTERIOR
GEOLOGICAL SURVEY

FRANK B. DURKEE, DIRECTOR OF PUBLIC
A. D. EDMONSTON, ENGINEER

(SAWYERS BAR 1:125 000)

123° 15'
41° 00'

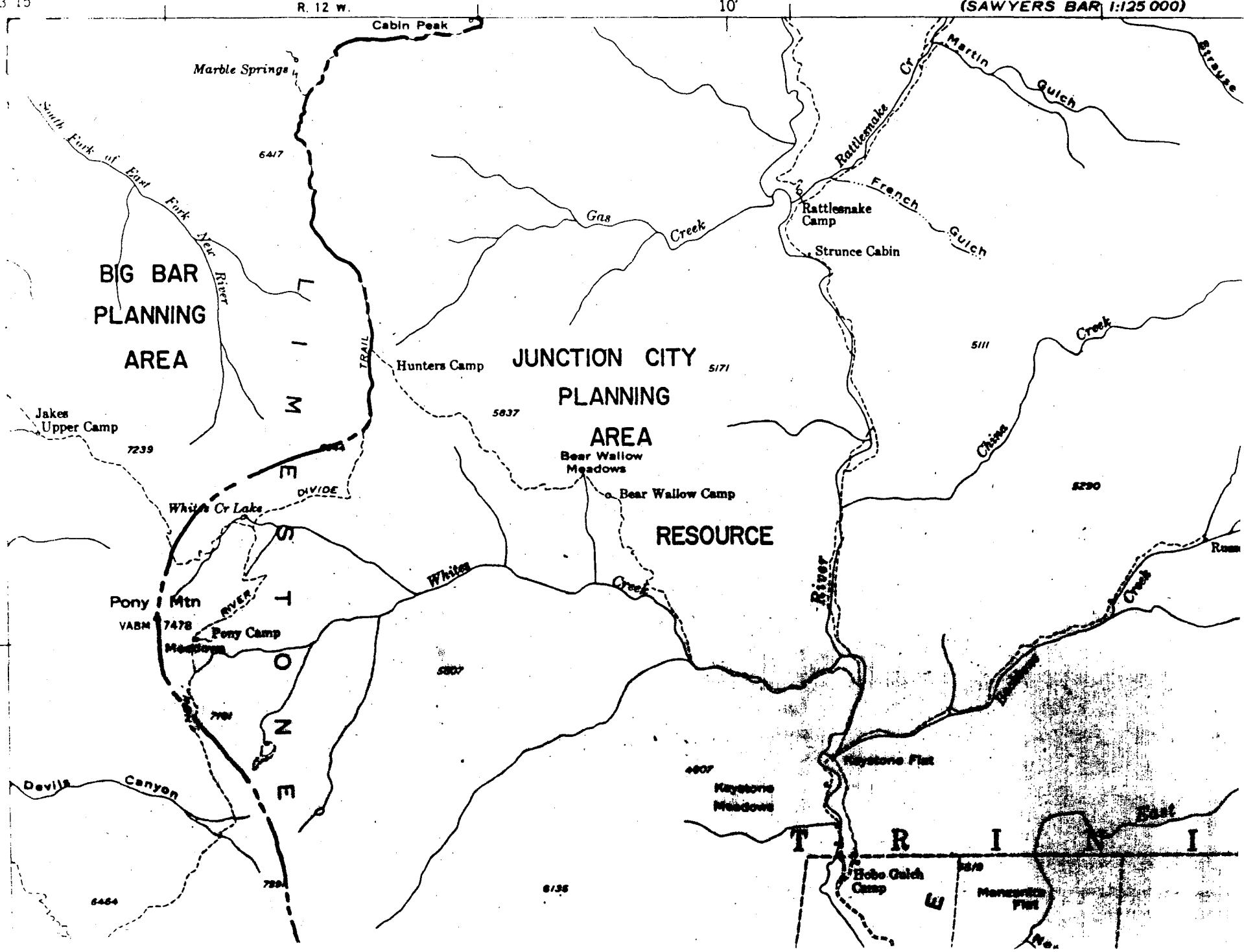
R. 12 W.

10'

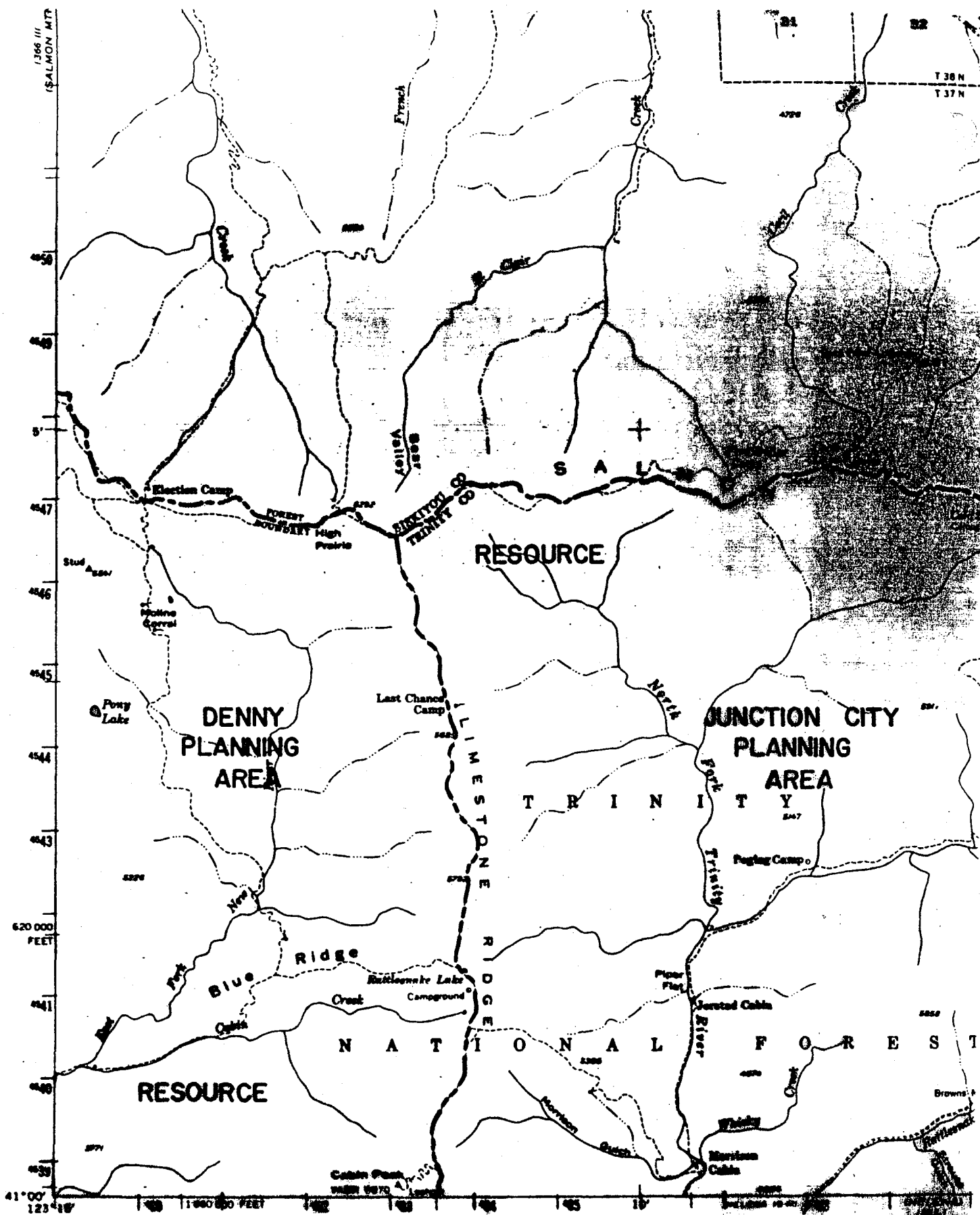
T. 36 N.

(59)

SHEET 7



1366 III
(SALMON MT)

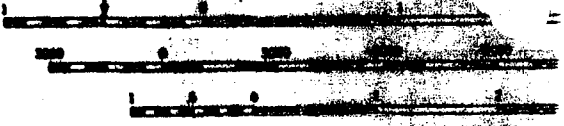
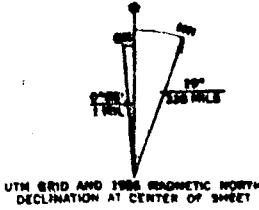


Mapped, edited, and published by the Geological Survey
 Control by USGS, USOBGS, and USFS

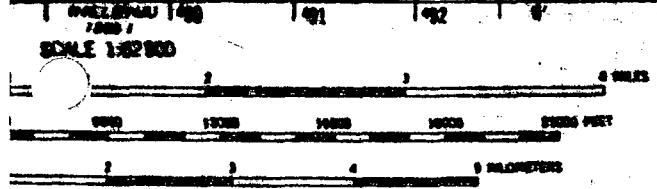
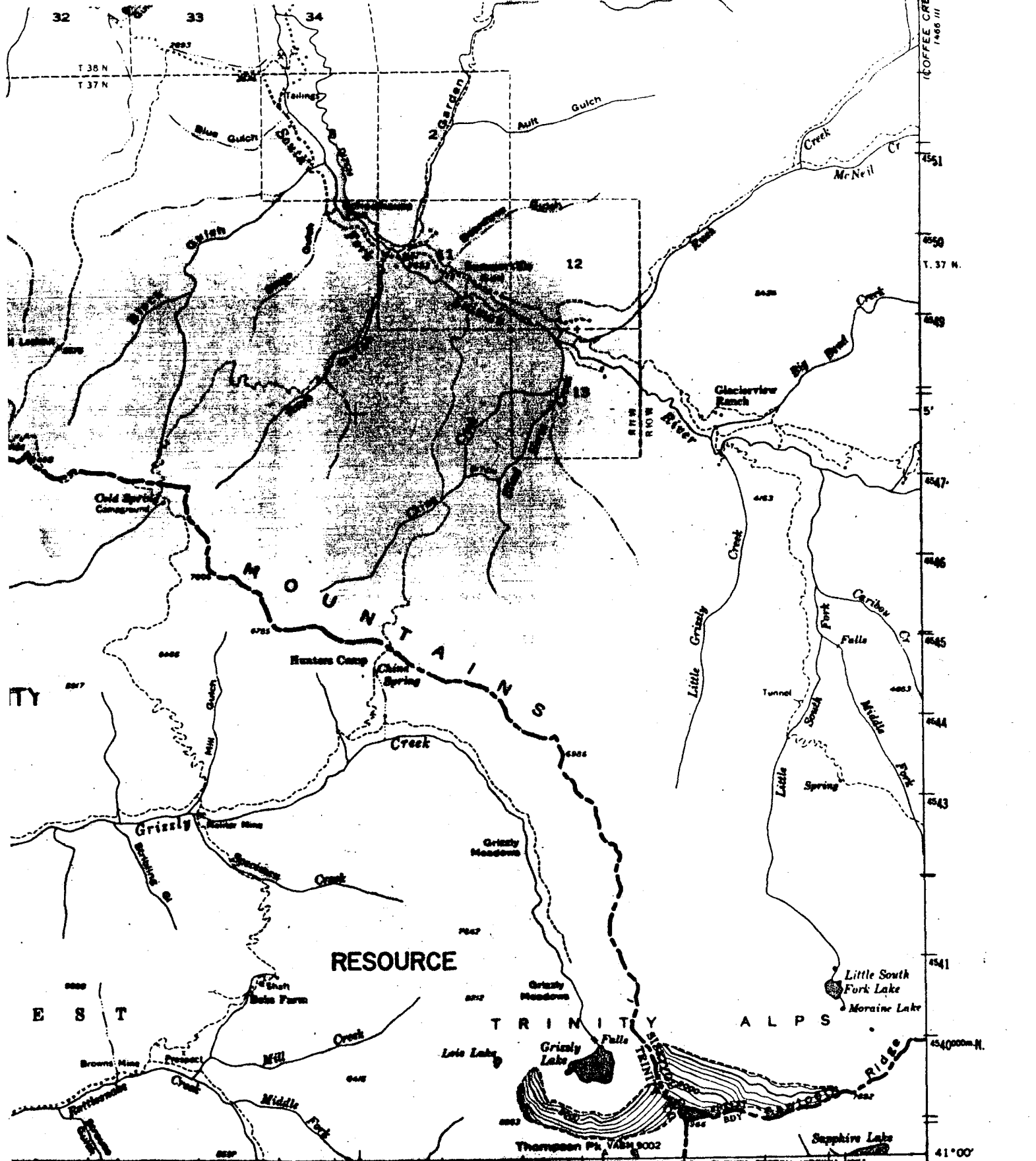
Topography from aerial photographs by multiple methods
 Aerial photographs from 1951. Field check 1965

Polyscopic projection. 1927 North American System
 10,000-foot grid based on California coordinate system, zone 1
 1000-meter Universal Transverse Mercator grid ticks,
 zone 10, shown in blue

Dashed land lines indicate approximate locations
 Certain land lines are omitted because of insufficient data



CONTOUR INTERVAL 5
 NATIONAL GEODETIC VERTICAL



VERTICAL INTERVAL 80 FEET
 BODÉTIC VERTICAL DATUM OF 1929



QUADRANGLE LOCATION

ROAD CLASSIFICATION
 Light-duty Unimproved dirt

SHEET 9
 CECILVILLE, CALIF.

TRINITY DAM
 1966 III

41° 00'

123° 00'

4540000m N.

4541

4543

4544

4545

4546

4547

4549

4550

T. 37 N.

4551

COFFEE CREEK
 1966 III

4551

4551

4551

4551

SCALE 1:62,500

1966 III

1966 I

1966 I

1966 I

1966 I

1966 I

1966 I

1966 I

1966 I

1966 I

1966 I

1966 I

1966 I

1966 I

1966 I

1966 I

1966 I

1966 I

1966 I

1966 I

1966 I

1966 I

1966 I

1966 I

1966 I

1966 I

1966 I

1966 I

1966 I

1966 I

1966 I

1966 I

1966 I

1966 I

1966 I

1966 I

1966 I

1966 I

1966 I

1966 I

1966 I

1966 I

1966 I