

SOUTH FORK



SOUTH FORK COMMUNITY PLAN

MAP BOOKLET

INDEX

Sheet 1	North and South Kelsey Peak
Sheet 2	Shell Mtn.
Sheet 3	Black Rock Mtn.
Sheet 4	Brushy Mtn.
Sheet 5	Rattlesnake Ridge
Sheet 6	Dubakella Mtn.
Sheet 7	Forest Glen
Sheet 8	Copper Hill
Sheet 9	Hidden Valley Ranch
Sheet 10	N. Yolla Bolly Mtns.

LEGEND

AG.....Agriculture

OSOpen Space

RRRural Residential

RE.....Resource

VVillage

AS.....Acquisition Site

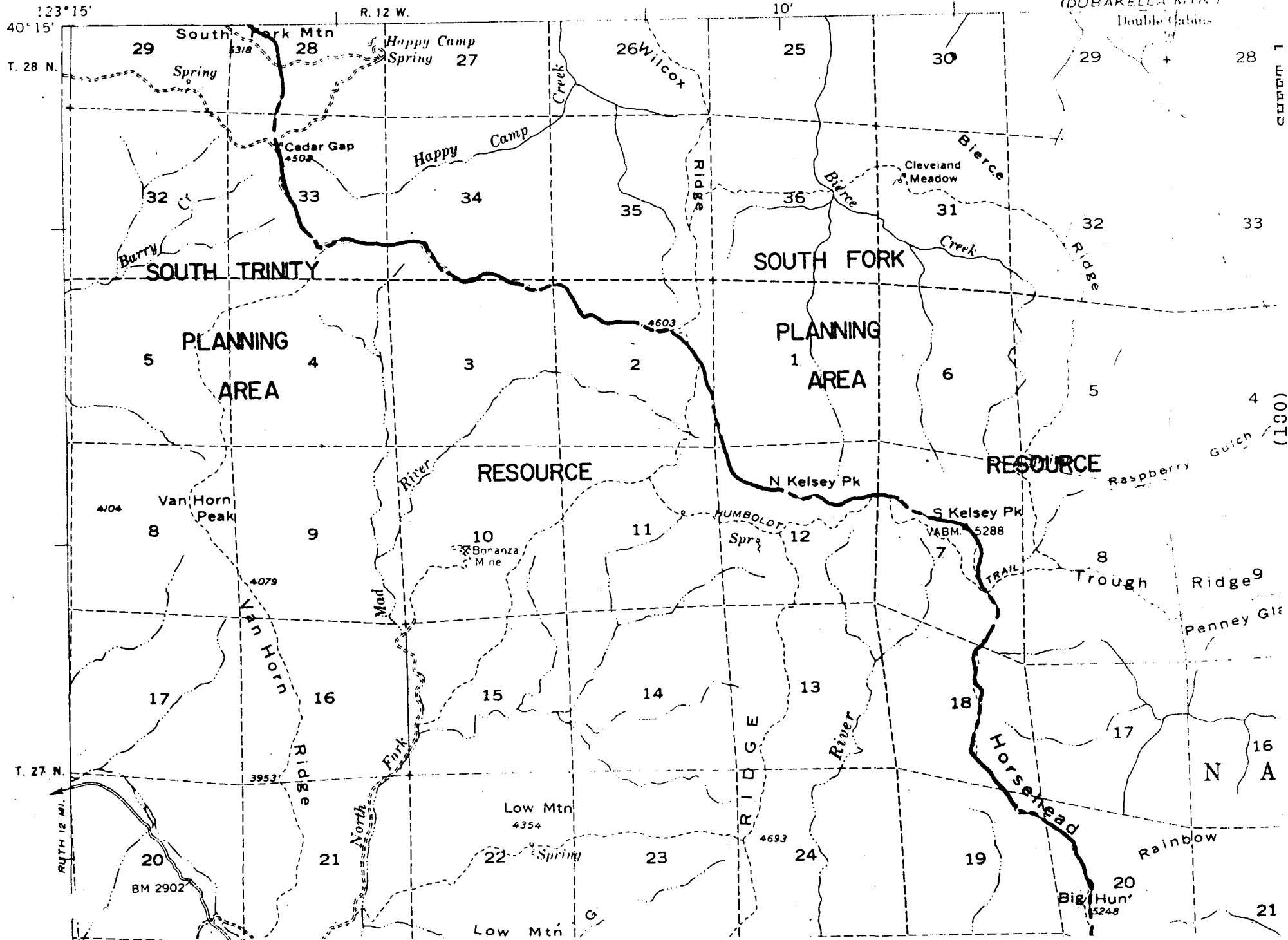
HS.....Historical Site

STSpecial Treatment

NRPNational Register
Potential

CEACritical Environ-
mental Area

NLNational Landmark



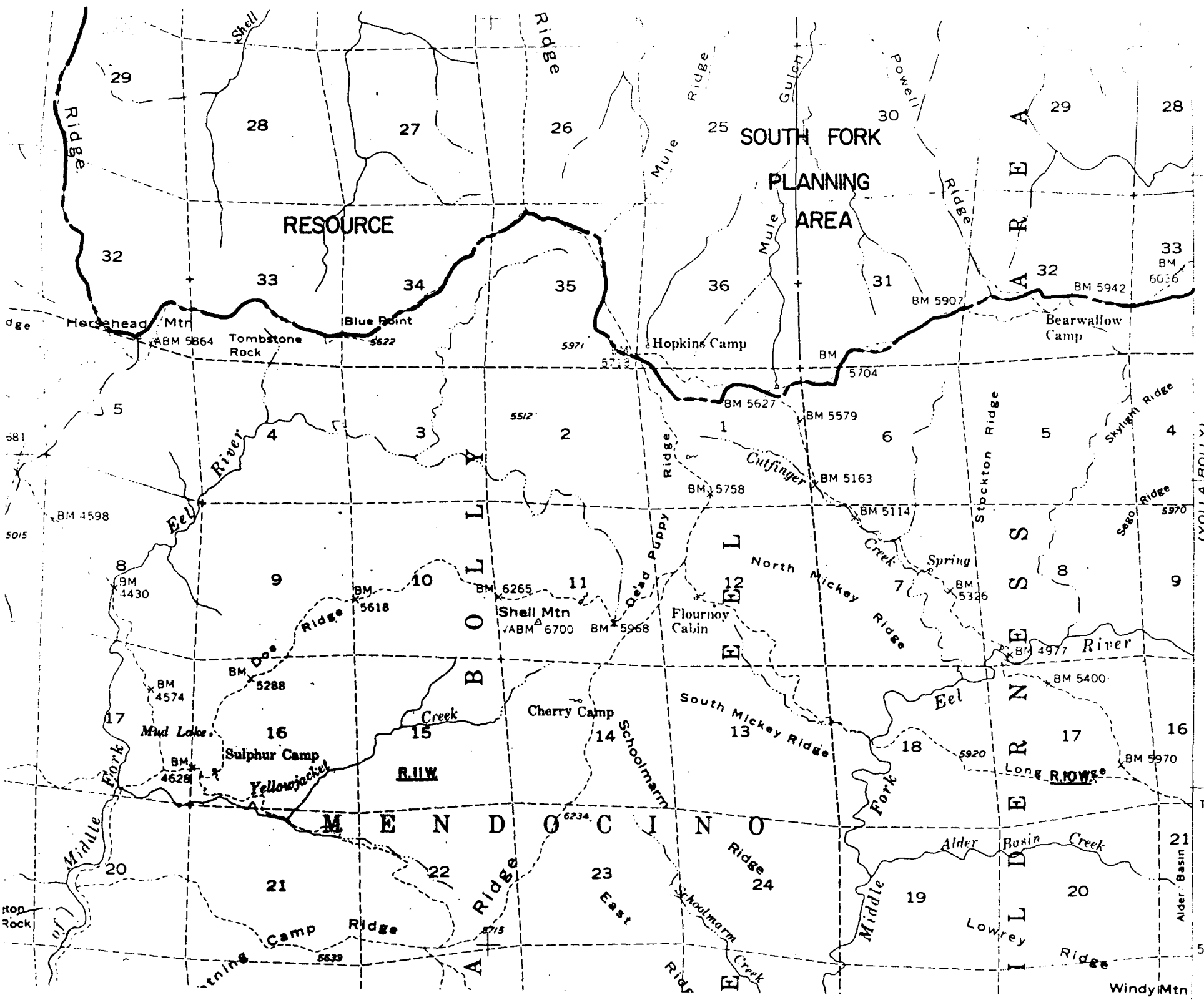
11 PEAK

100 FT

(130)

N A

21



(YOLLA BOLLY)

(1161)

(C)

(DUBAKELLA MTN.)

R. 11 W.

5'

19 MI. TO CALIF. 36 R. 10 W. 720 000 FT.

3° 00'

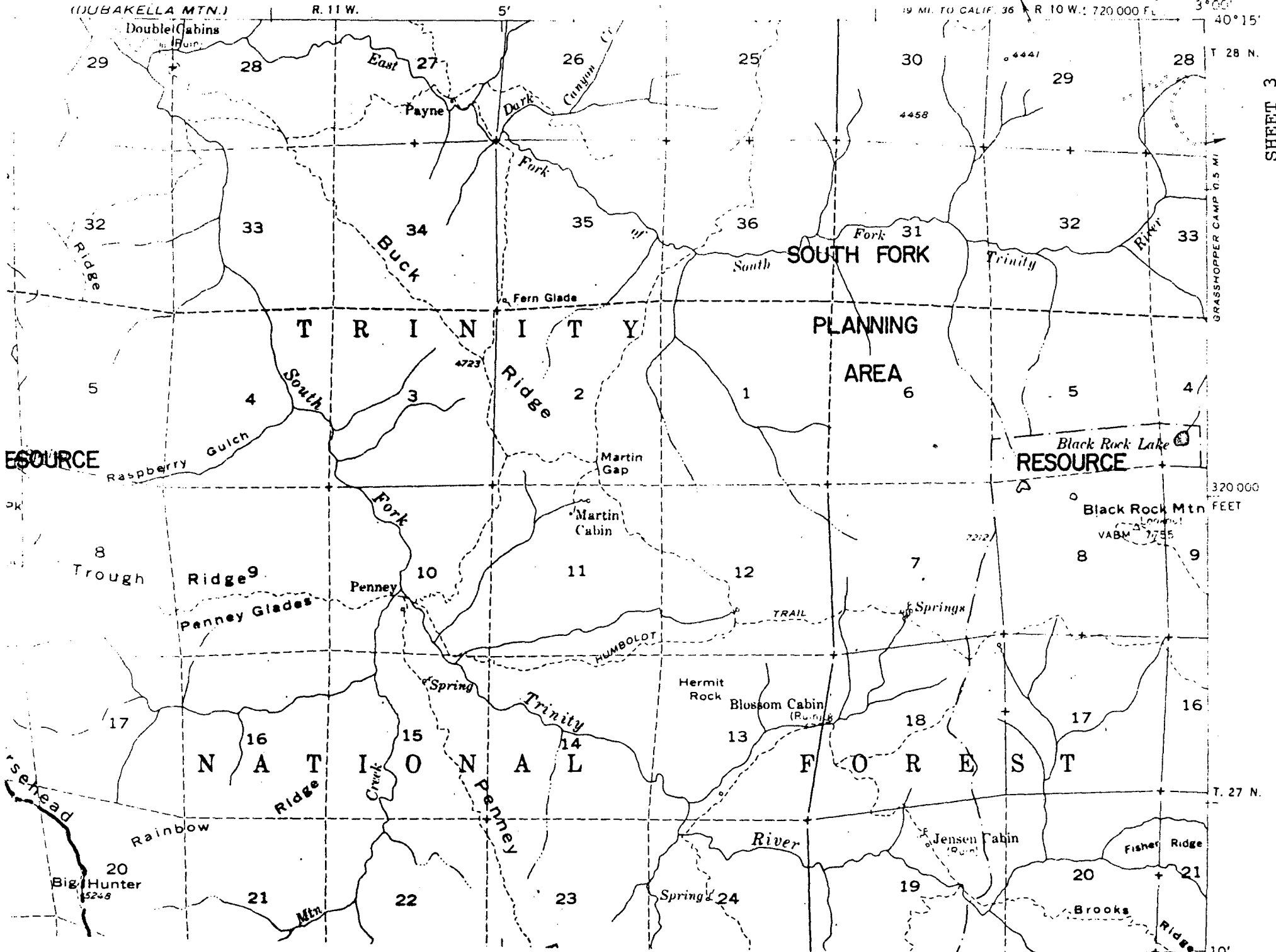
40° 15'

T. 28 N.

GRASSHOPPER CAMP 0.5 MI

SHEET 3

(182)



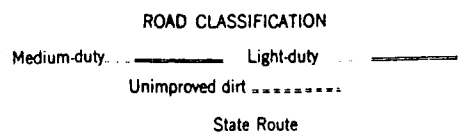
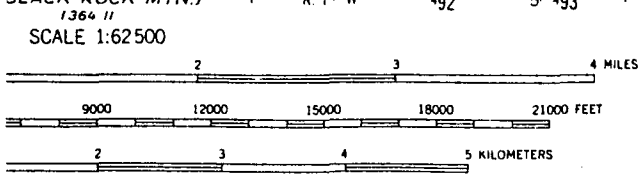
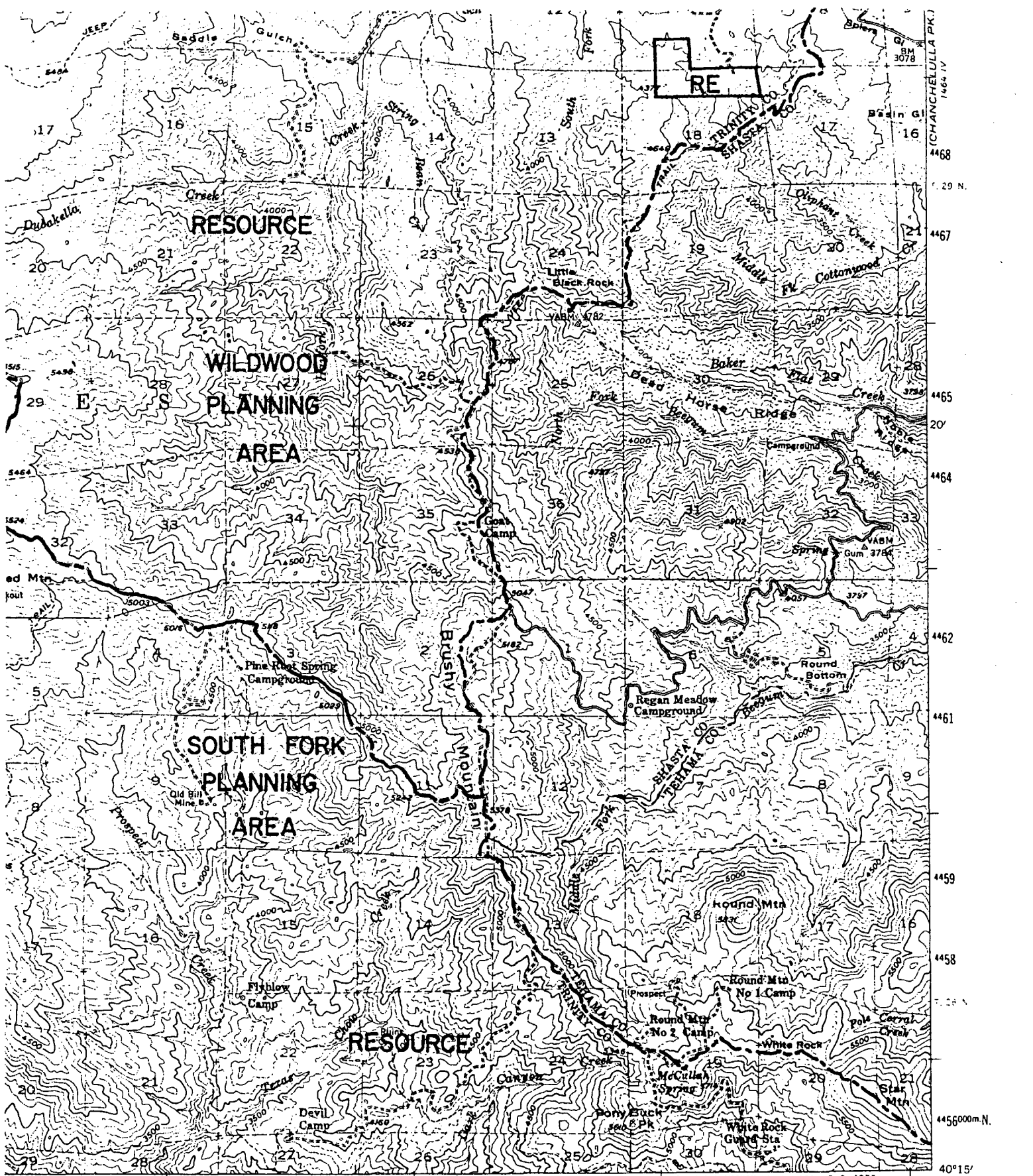
RESOURCE

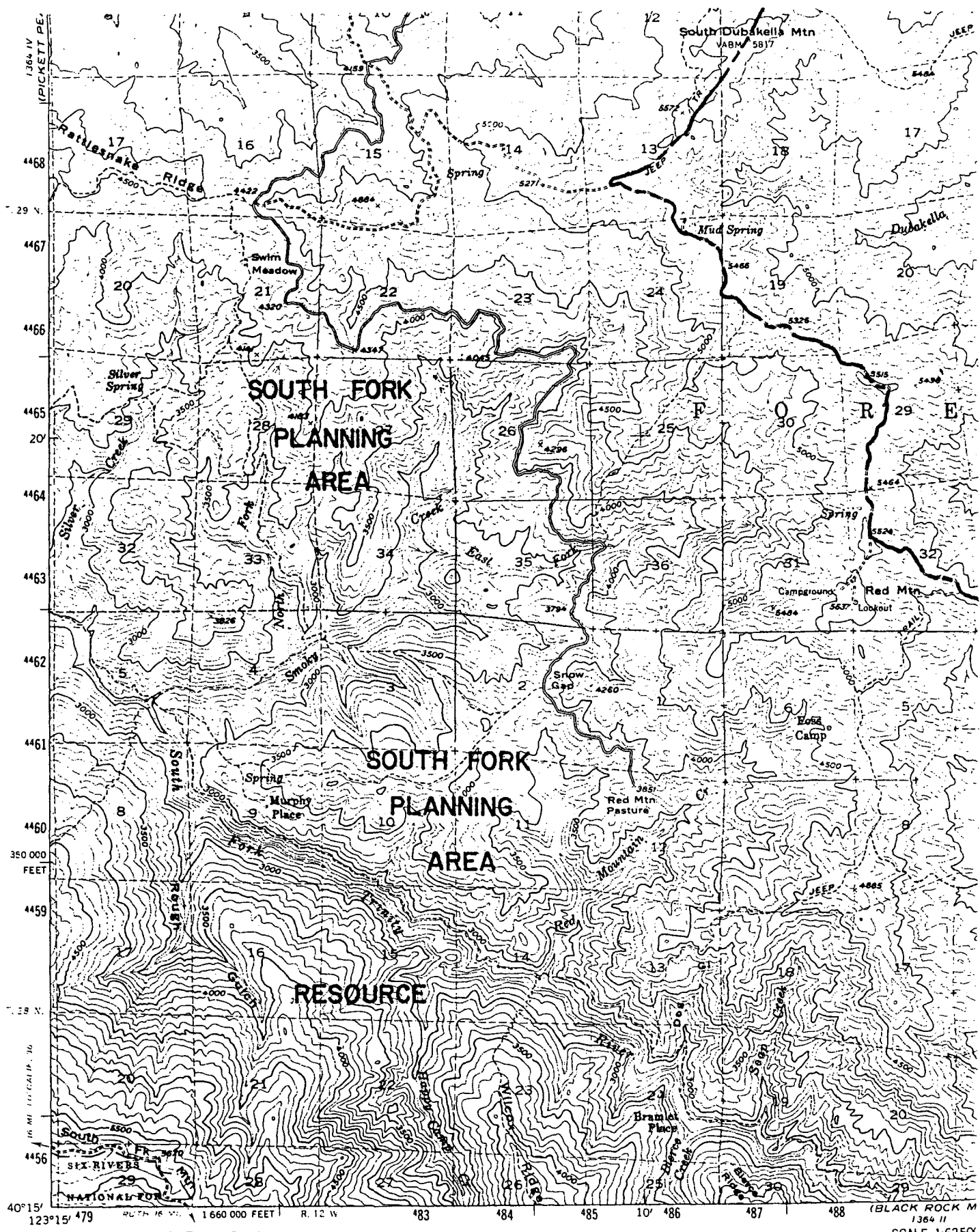
Black Rock Lake
RESOURCE

320 000
FEET

T. 27 N.

10'

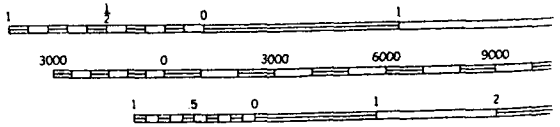
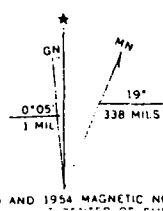




Mapped by the U. S. Forest Service
 Edited and published by the Geological Survey
 Control by USGS, USC&GS, and USFS.

Topography from aerial photographs by KEK plotter
 Aerial photographs taken 1947. Field check by USGS 1954
 Polyconic projection. 1927 North American datum
 10,000-foot grid based on California coordinate system, zone 1
 Dashed land lines indicate approximate locations
 1000-meter Universal Transverse Mercator grid ticks,
 zone 10, shown in blue

(KETTENPOMI)
 1364 III

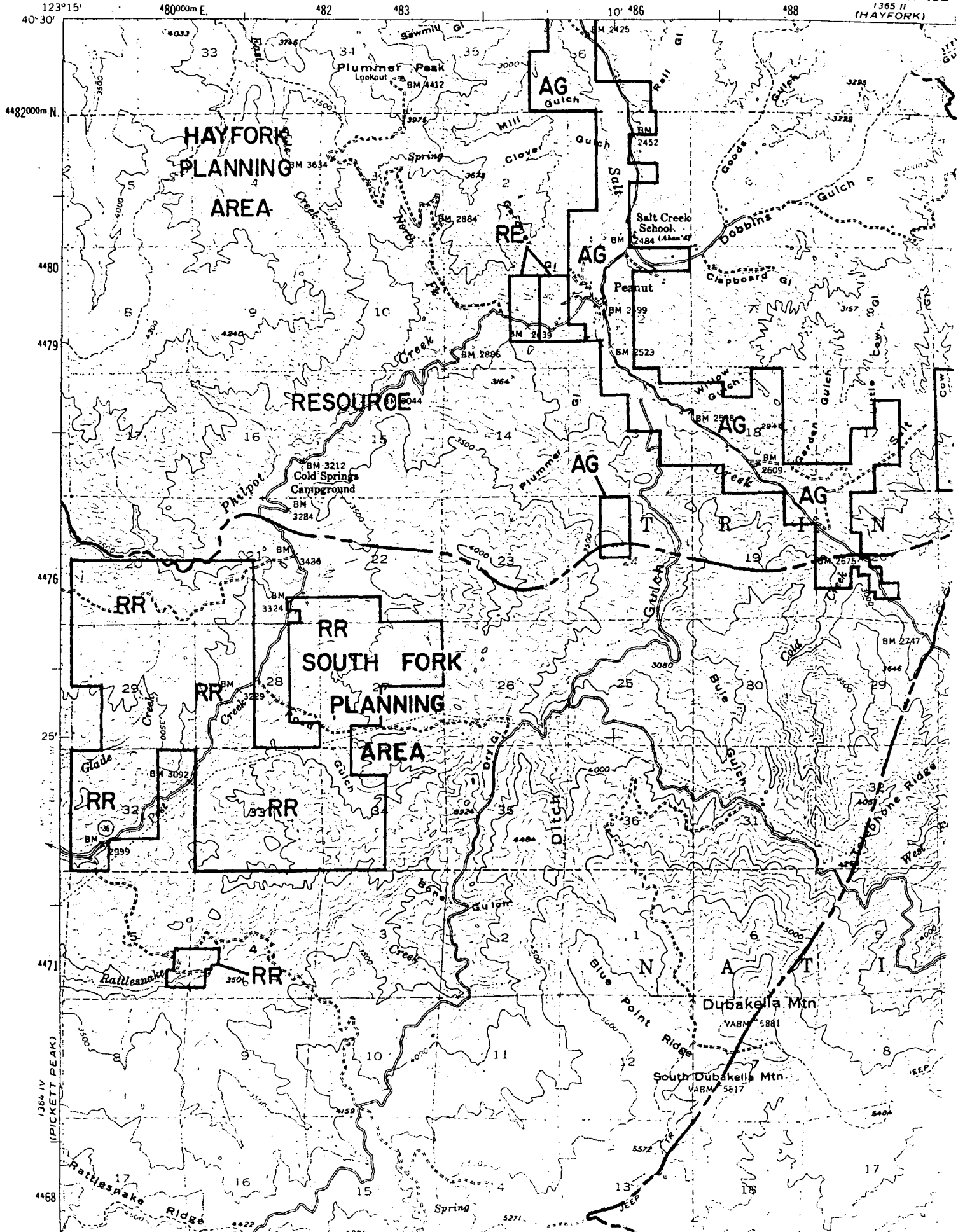


CONTOUR INTERVAL
 DATUM IS MEAN SEA

1365 II (HAYFORK)

UNITED STATES DEPARTMENT OF THE INTERIOR GEOLOGICAL SURVEY

UNITED STATES DEPARTMENT OF AGRICULTURE FOREST SERVICE 1365 II (HAYFORK)



123°15' 40°30' 4482000m N 4480 4479 4476 25 4471 4468

33 34 35 36 37 38 39 40 41 42 43 44 45 46 47 48 49 50 51 52 53 54 55 56 57 58 59 60 61 62 63 64 65 66 67 68 69 70 71 72 73 74 75 76 77 78 79 80 81 82 83 84 85 86 87 88 89 90 91 92 93 94 95 96 97 98 99 100

HAYFORK PLANNING AREA

RESOURCE AREA SOUTH FORK PLANNING AREA

AG Gulch

RE

AG

AG

AG

AG

RR

RR SOUTH FORK PLANNING AREA

RR

RR

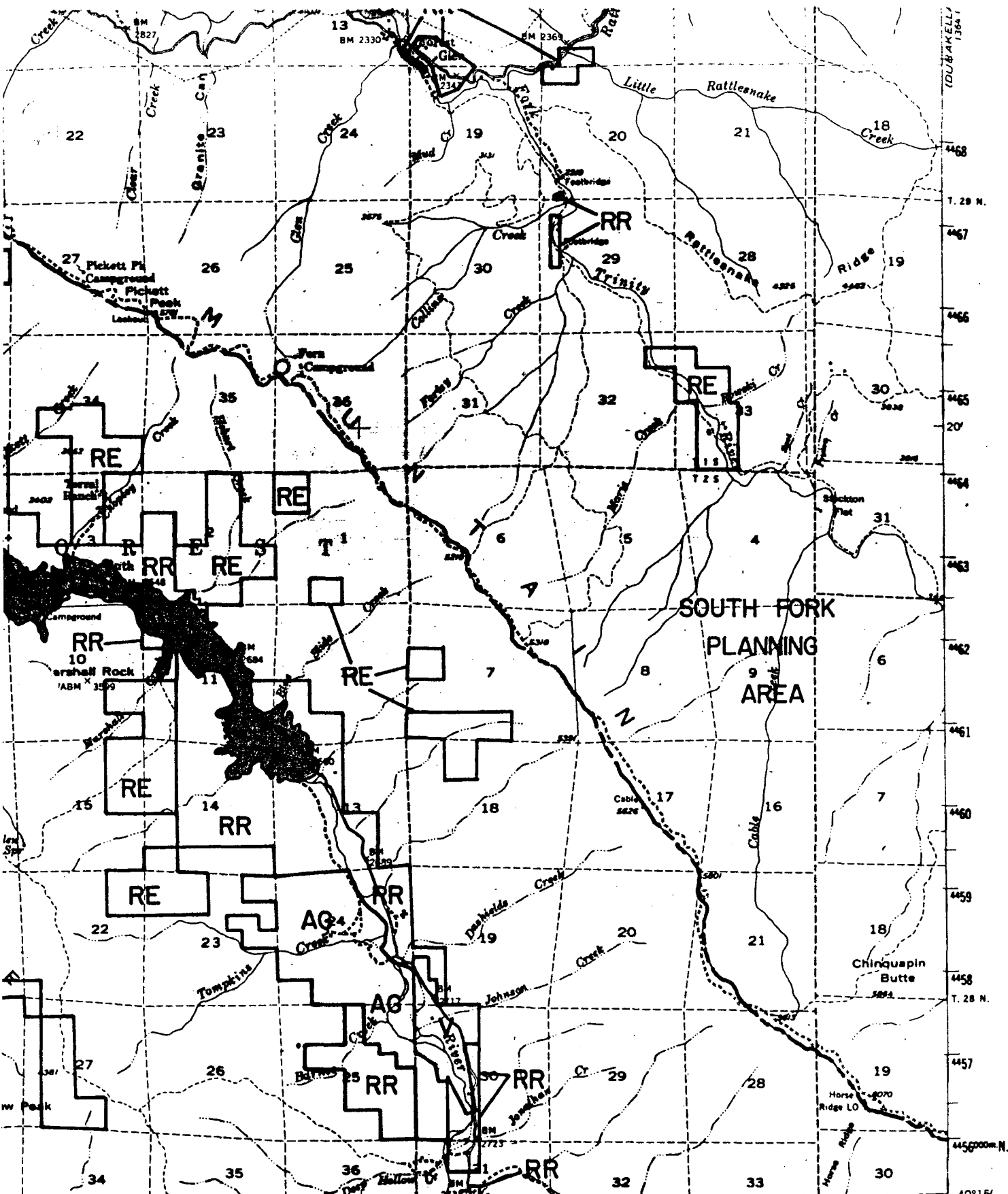
RR

RR

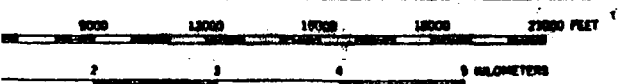
Dubakella Mtn VABM 5881

South Dubakella Mtn VABM 5617

1366 IV (PICKETT PEAK)



(KETTENPOM) 1964 W
 E 1:62500
 THREE POINTS 6.8 MI.
 U.S. GEOLOGICAL SURVEY, WASH. D. C. - 1971
 R. 12 W. 123° 15' W
 4770000 M. E.
 40° 15' N.



ROAD CLASSIFICATION

- Light-duty
- Unimproved dirt
- State Route

SPECIAL PRINTING
 Contours and woodland symbols omitted

(BLACK ROCK MT. 1964 W)

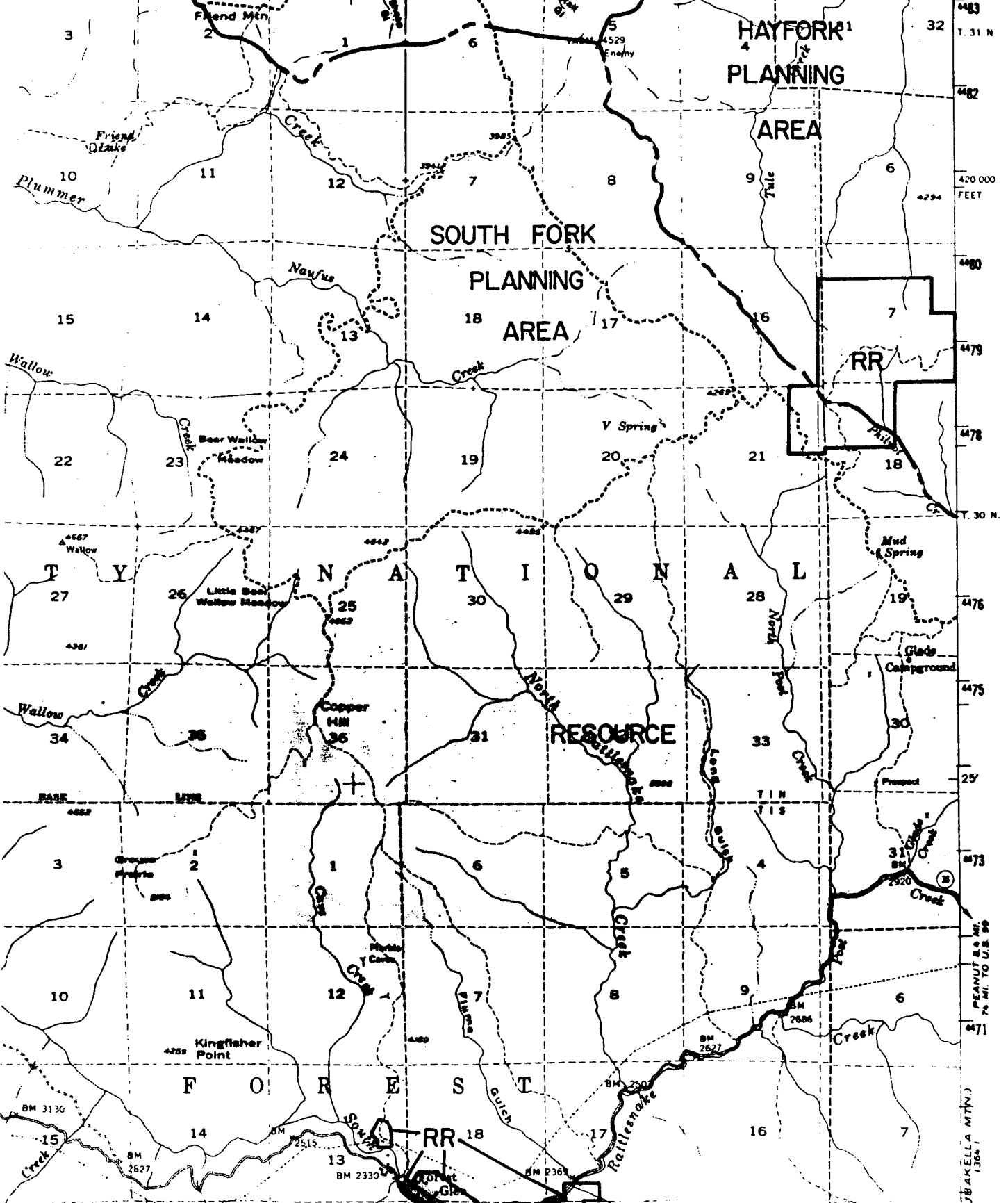
PICKETT PEAK, CALIF.
 N4015 - W12315/15

UNITED STATES
DEPARTMENT OF AGRICULTURE
FOREST SERVICE

PICKETT PEAK QUADRANGLE
CALIFORNIA—TRINITY CO.
15 MINUTE SERIES (TOPOGRAPHIC)

1939 II
(HAYFORK)

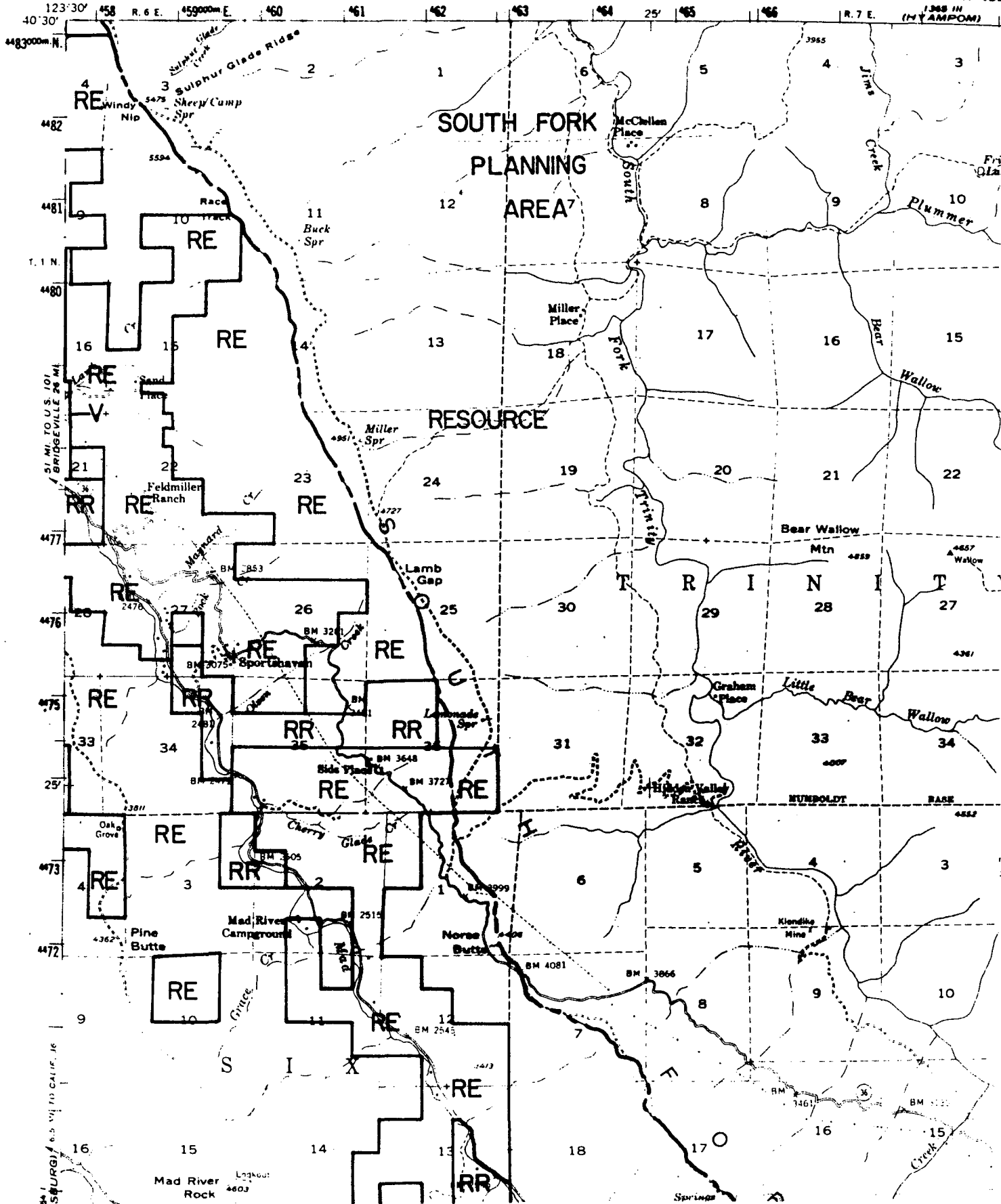
INDIAN VALLEY GUARD STA. 10 MI. R. & E. 1976 1 650 000 FEET R. 12 W. 123° 15' 40' 30"



UBAKELLA MTKV.
13041

UNITED STATES
DEPARTMENT OF THE INTERIOR
GEOLOGICAL SURVEY

UNITED STATES
DEPARTMENT OF AGRICULTURE
FOREST SERVICE



1964 II
ROCK MOUNTAIN

UNITED STATES
DEPARTMENT OF THE INTERIOR
GEOLOGICAL SURVEY

UNITED STATES
DEPARTMENT OF AGRICULTURE
FOREST SERVICE

